

# genware audit processor

# Application Management

## Usage - Usability - Content - Security

The Genware Audit Processor includes functionality for Business and Technical users. As a Powered by IBM Cognos software application, content is provided through a familiar interface.

### Dashboards

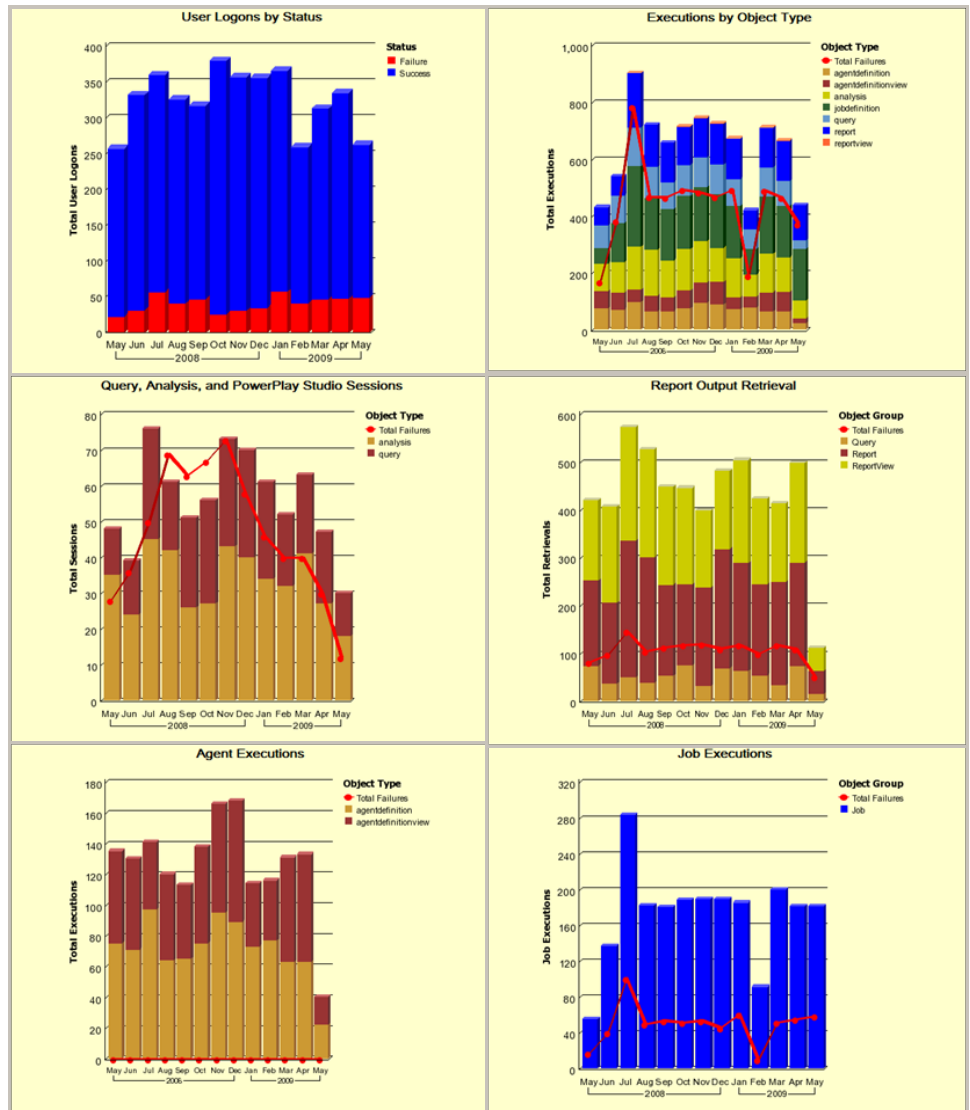
Dashboard style reports provide easy to read trending information and the ability to drill through to detail reports.

The Genware Audit Processor includes Dashboard-style reports that provide trending information with the ability to drill through to supporting detail information.

Monitoring application usage trends and their impact on usability is essential. Usability qualifies the application's performance and hence, the user experience. Information includes measurable values such as average report runtime and number of errors received. The Genware Audit Processor provides usability information that easily directs attention to areas affecting the user experience.

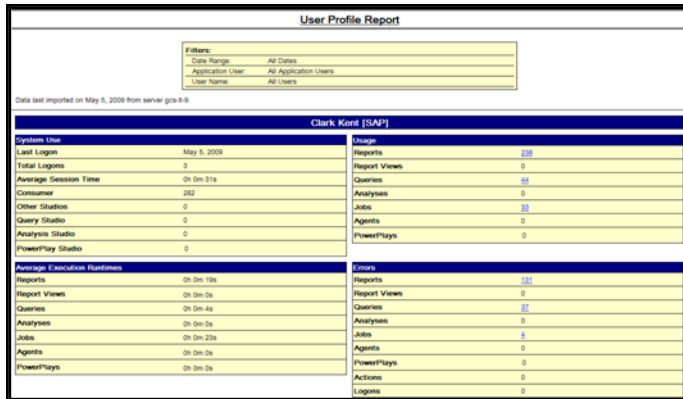
Dashboards can be run for a specified time period and can include information for the entire system or be filtered to only include data for a selected application.

Applications are defined by grouping content and users into logical applications with the Genware Application Management utility.



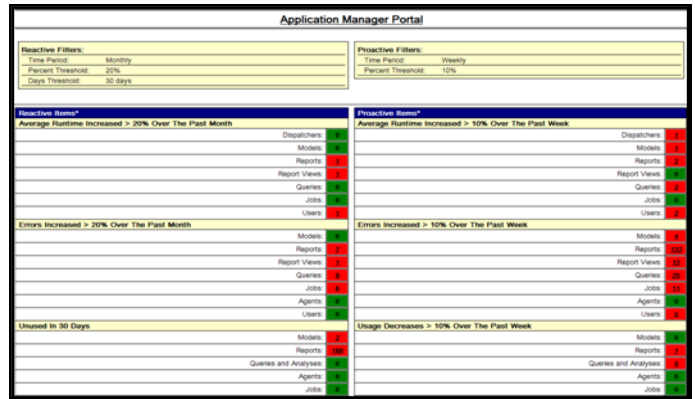
## Profile Reports

Server, Application, and User Profile reports provide snapshots of usage and usability information. Leverage these reports as feedback to your community.



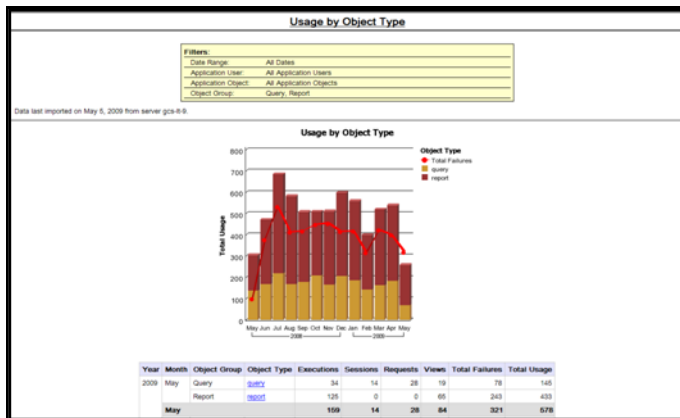
## Genware Metrics for Application Management

Proactively manage your applications with over 50 metrics spread across four role-based portal pages. The Genware Audit Processor guides you to the area that requires attention.



## Detail Reports

A number of detail reports provide direct access to the information. With over 100 detail reports out of the box, you have access to all of the Usage, Usability, Content, and Security information needed to manage your Applications.



## Administration and Security

Administrators are responsible for managing application servers to ensure a scalable environment that is secured and adheres to license policies. Applications are often deployed to a shared infrastructure leveraged by various business and development communities. The Genware Audit Processor provides easy access to administrative information including security structures and assignments, application and user content, and saved output sizes. This information reduces the effort required to support and manage the application environment.

Regulations and security requirements demand that Business Intelligence applications be monitored to track access to information. The Genware Audit Processor facilitates this requirement in two areas: Functional Security and Usage Validation.

Genware Computer Systems Inc. provides customers with the tools and services needed to develop and implement customized Business Intelligence solutions. Our Joint Project team follows a methodology that requires technology and customer input throughout the lifecycle and delivers solutions focused on the end user needs.

Genware services include Business Intelligence Application Development, Staff Augmentation, and Application Administration.



GENWARE COMPUTER SYSTEMS Inc



1700 Rte 23N Suite 170, Wayne, NJ 07470  
 PO Box 4447, Wayne, NJ 07474 - 4447  
 Tel (973) 633-6606  
 Fax (973) 633-6647  
 Email: Service@GenwareCS.com  
 www.GenwareCS.com

IBM® Cognos®, IBM® Cognos® 8, IBM® Cognos Series 7™, IBM Cognos ReportNet®, IBM® Cognos Access Manager™, IBM® Cognos Impromptu® Web Reports, and IBM® Cognos PowerPlay® Enterprise Server are trademarks of International Business Machines Corporation in the United States, other countries, or both. All other trademarks mentioned herein are the property of the respective trademark holders. Genware Audit Processor™ and Genware Metrics for Application Management™ are trademarks of Genware Computer Systems, Inc.